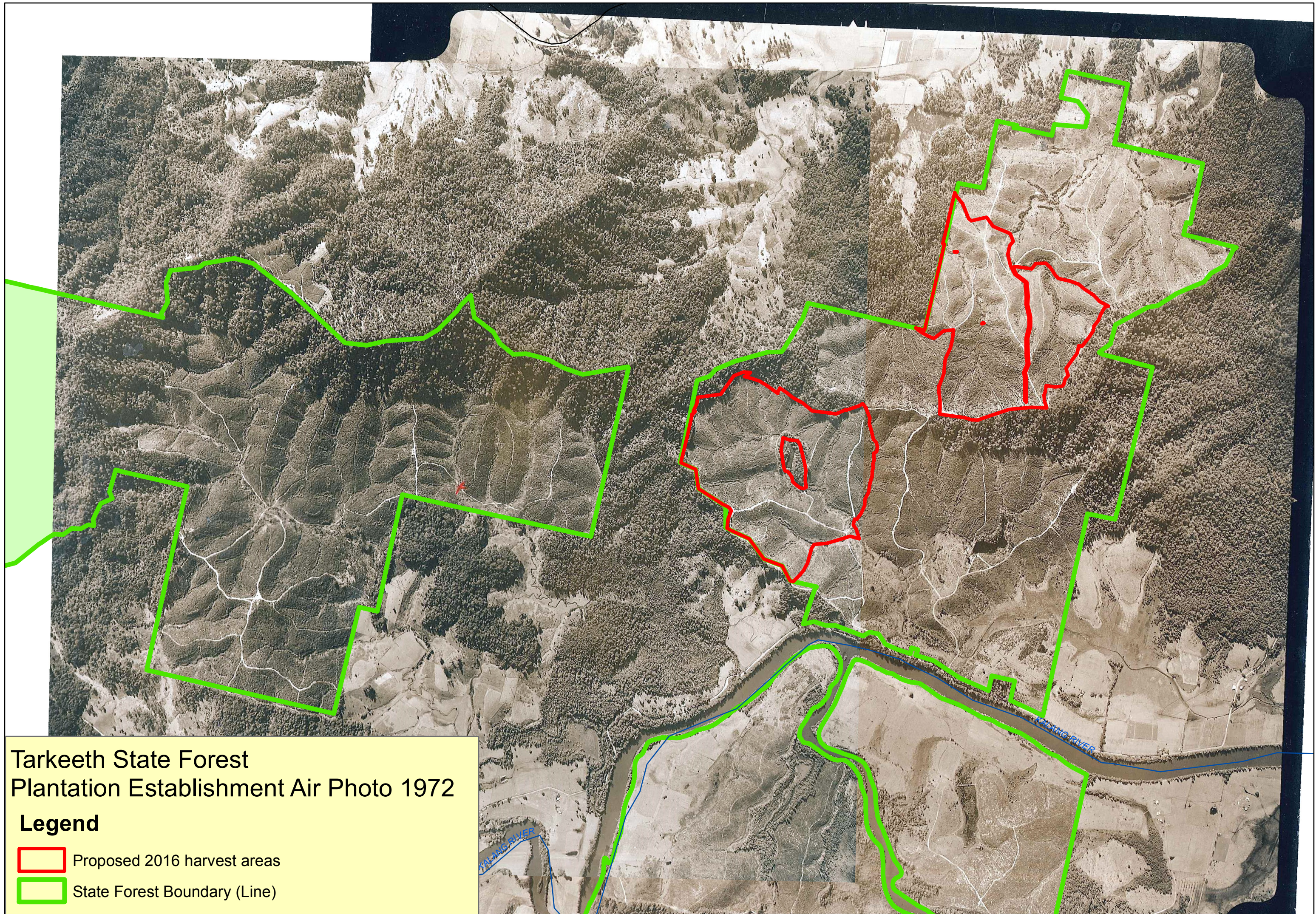


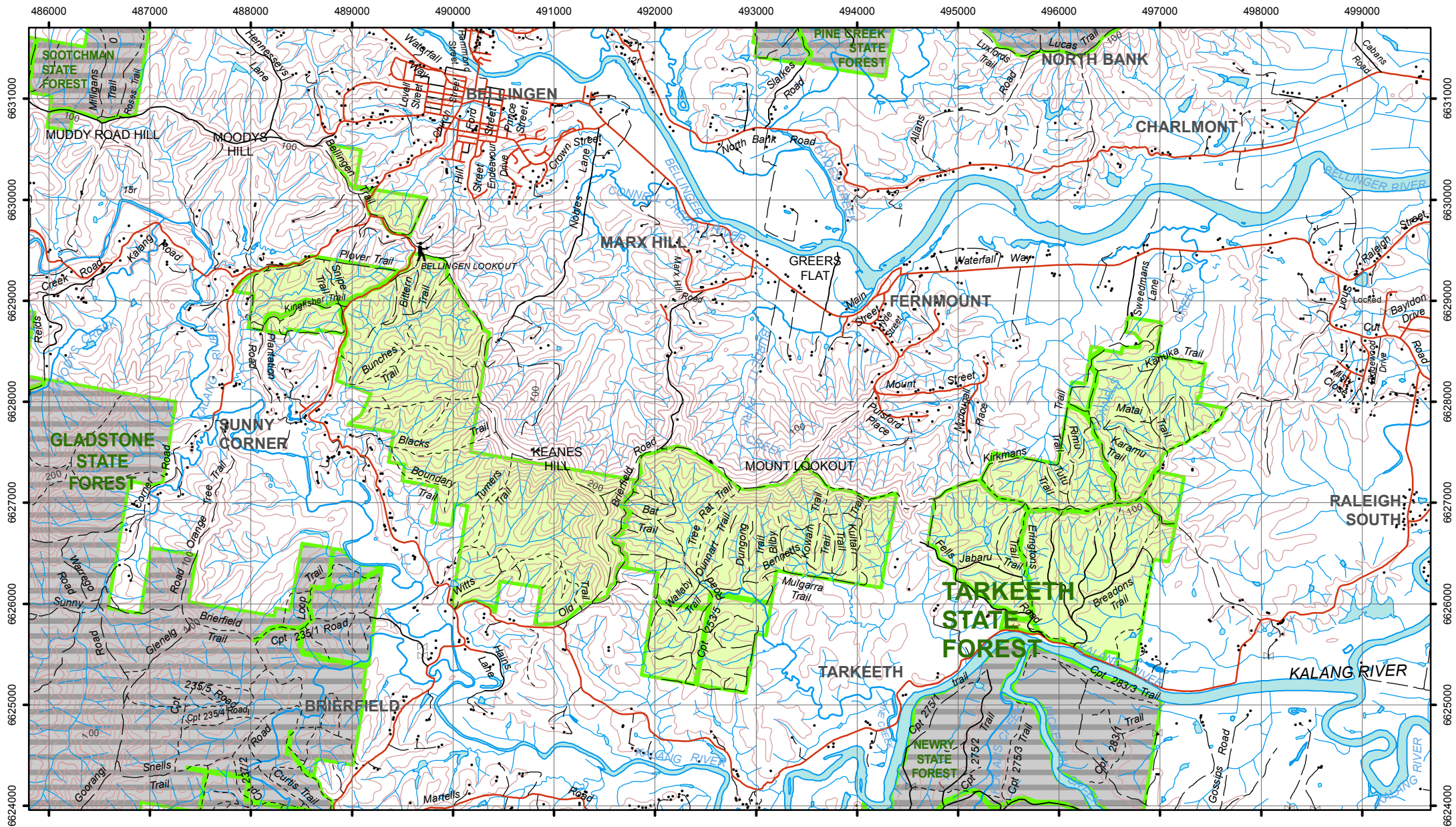
TARKEETH STATE FOREST PLANTATION FACT SHEET

- Tarkeeth State forest is located on the NSW north coast 2km south of Bellingen and 30km south-east of Coffs Harbour. The forest covers 1,450 hectares and comprises 850 hectares (59%) of hardwood plantation (Flooded Gum & Blackbutt species) and 600 hectares (41%) of native regrowth forest.
- Prior to 1970 the cleared component of the land was used for dairying and the forested component used for private native forestry.
- The eucalypt plantations in Tarkeeth State forest were established in 1970 by Australian Paper Manufacturers (APM) on the former dairying land.
- The Tarkeeth land was acquired by the Crown and dedicated as State forest in 1984 for the purpose of multiple-use forest management and domestic timber supply.
- A comprehensive regional assessment (CRA) in the late 1990s determined that the native forest components of Tarkeeth State forest were not required to be part of the State's Comprehensive, Representative and Adequate (CAR) reserve system. Surrounding public forests that have been transferred to the reserve system include Dorrigo National Park, Bellinger River National Park, Bongil Bongil National Park, Juugawarri Nature Reserve, Ganay Nature Reserve and Jaaningga Nature Reserve.
- Since 1984 Tarkeeth State Forest has been an active working forest. Its recent plantation history includes:
 - Selective native forest timber harvesting events in 2000, 2002 and 2012;
 - Plantation thinning in 2000 and 2002;
 - Creation of a plantation eucalypt seed orchard in 2000 as a important source of high value plantation seed;
 - Clearfall harvesting and replanting of 100 hectares of plantation in 2012.

Over this period there have been no significant issues with the Forestry Corporation's (FCNSW) management practices.

- Tarkeeth State Forest has been comprehensively surveyed for its environmental values. These values are protected through forest zoning and operational exclusions and restrictions.
- A survey of threatened plants and animals has recently been completed.
- All of the plantations in Tarkeeth State Forest are authorised under the Plantation & Reafforestation Act, 1999. This authorisation recognises that the trees have been officially planted and managed for the purpose of timber production and are legally available for harvesting and replanting.
- In 2016 the Forestry Corporation (FCNSW) plan to harvest 150 hectares (18%) of the Tarkeeth plantations. A further 100 hectares (12%) of the plantation may be subject to harvesting in 2017.
- Over the last 12 months FCNSW has actively consulted with adjoining landholders (neighbours) and the Mayor and staff of Bellingen Council about their plantation harvesting plans. Concessions arising from these consultations include:
 - A reduction in the size of plantation parcels that will be harvested in any given year;
 - the maintenance of a wildlife connectivity corridor;
 - the engagement of a soils specialist to provide site specific advice on cultivation and other site preparation practices;
 - The inclusion of Tallowwood when the plantations are replanted
- Plantations that are harvested will be replanted with Blackbutt (90%) and Tallowwood (10%) species which are endemic to the local area. For every hectare harvested over 1,000 new trees will be re-established. There will be no aerial spraying and no Simazine will be used. All herbicide use will be undertaken in accord with manufacturer's instructions and environmental protection law.
- Timber from the plantations is an essential component of the long term supply for the region's timber industry. The two planned harvest events are expected to yield around 40,000 m3 of plantation log product that will generate around \$20 million in industry valued added.





Tarkeeth State Forest Fossicking Area Map

DISCLAIMER:
This map is not guaranteed to be free from error or omission. Therefore, the State of New South Wales, Forestry Corporation of NSW and its employees disclaim liability of any act done or omission made on the information on the map and any consequences of such acts or omissions.

Contour interval 20 meters
Coordinate System: GDA 1994 MGA Zone 56

- | | | |
|--|------------------|------------|
| National Park | Sealed Road | Yard-Rural |
| State Forest - Permitted Fossicking Area | Unsealed Road | Building |
| Fossicking NOT Permitted - Flora Reserve | Vehicular Track | Mine Site |
| Fossicking NOT Permitted - FMZ1 | Four Wheel Drive | Tower |
| Fossicking NOT Permitted - Crown Lease | Walking Track | Dam |
| Fossicking NOT Permitted - Other | River, Creek | Gate |
| Other State Forest | Contours | |

